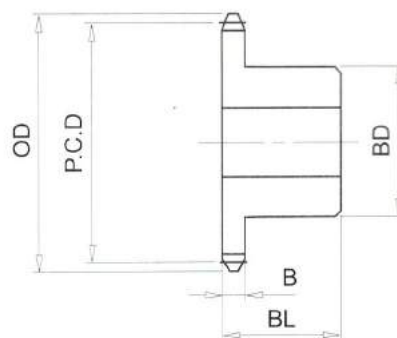


RS100# (11/4" PICH) DIMENSIONS

Bánh Răng Xích (gù)
Chất Liệu S35C

B Type Sprocket
Material S35C



No. of Teeth	Outside Diam. OD	Pitch Diam. P.C.D	Bottom or Capliper Diam.	BD	BL	B
32	341	323.92	304.87	117	56	17.6
33	352	334.01	314.59	117	56	17.6
34	362	344.10	325.05	117	56	17.6
35	372	354.20	334.79	117	63	17.6
36	382	364.29	345.24	127	63	17.6
37	392	374.38	355.00	127	63	17.6
38	402	384.48	365.43	127	63	17.6
39	412	394.57	375.20	127	63	17.6
40	422	404.67	385.62	127	63	17.6
41	433	414.77	395.41	127	63	17.6
42	443	424.86	405.81	127	63	17.6
43	453	434.96	415.62	127	63	17.6
44	463	445.06	426.01	127	63	17.6
45	473	455.15	435.83	127	63	17.6
46	483	465.25	446.20	127	63	17.6
47	493	475.35	456.04	127	63	17.6
48	503	485.45	466.40	127	63	17.6
49	514	495.55	476.25	127	63	17.6
50	524	505.65	486.60	127	63	17.6
51	534	515.75	496.45	127	63	17.6
52	544	525.85	506.80	127	63	17.6
53	554	535.95	516.66	127	63	17.6
54	564	546.05	527.00	147	80	17.6
55	574	556.15	536.87	147	80	17.6