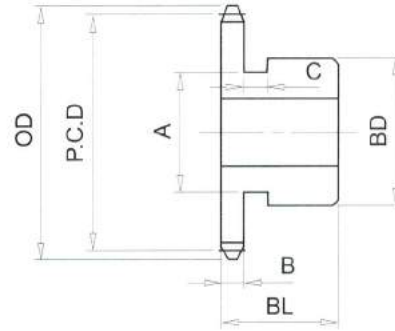


RS40# (1/2" PICH) DIMENSIONS

Bánh Răng Xích (gù)
 Chất Liệu S35C
 B Type Sprocket
 Material S35C

B型鏈齒輪
 材質 **S35C**



No. of Teeth	Outside Diam. OD	Pitch Diam. P.C.D	Bottom or Capliper Diam.	A	BD	BL	B	C
8	38	33.19	25.24	20	24	22	7.2	5
9	42	37.13	28.62	24	28	22	7.2	5
10	46	41.10	33.15	27	32	22	7.2	5
11	51	45.08	36.67	30	35	22	7.2	5
12	55	49.07	41.12	36	40	22	7.2	5
13	59	53.07	44.73	37		22	7.2	
14	63	57.07	49.12	42		22	7.2	
15	67	61.08	52.80	46		22	7.2	
16	71	65.10	57.15	50		22	7.2	
17	76	69.12	60.87	54		22	7.2	
18	80	73.14	65.19	57		22	7.2	
19	84	77.16	68.95	62		22	7.2	
20	88	81.18	73.23	67		25	7.2	
21	92	85.21	77.02	71		25	7.2	
22	96	89.24	81.29	75		25	7.2	
23	100	93.27	85.10	77		25	7.2	
24	104	97.30	89.35	63		25	7.2	
25	108	101.33	93.18	63		25	7.2	
26	112	105.36	97.41	63		25	7.2	
27	116	109.40	101.26	63		25	7.2	
28	120	113.43	105.48	63		25	7.2	
29	124	117.46	109.34	63		25	7.2	
30	128	121.50	113.55	63		25	7.2	
31	133	125.53	117.42	68		28	7.2	