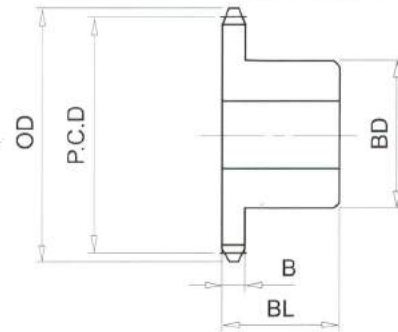


RS35# (3/8" PICH) DIMENSIONS

Bánh Răng Xích (gù)
 Chất Liệu S35C
 B Type Sprocket
 Material S35C



No. of Teeth	Outside Diam. OD	Pitch Diam. P.C.D	Bottom or Capliper Diam.	BD	BL	B
56	175	169.88	164.80	63	25	4.2
57	178	172.91	167.76	63	25	4.2
58	181	175.94	170.86	63	25	4.2
59	184	178.97	173.82	63	25	4.2
60	187	182.00	176.92	63	25	4.2
61	190	185.03	179.89	63	25	4.2
62	194	188.06	182.98	63	25	4.2
63	197	191.09	185.95	63	25	4.2
64	200	194.12	189.04	63	25	4.2
65	203	197.15	192.01	68	25	4.2
66	206	200.18	195.10	68	25	4.2
67	209	203.21	198.08	68	25	4.2
68	212	206.24	201.16	68	25	4.2
69	215	209.27	204.14	68	25	4.2
70	218	212.30	207.22	68	25	4.2
71	221	215.34	210.20	68	25	4.2
72	224	218.37	213.29	68	25	4.2
73	227	221.40	216.27	68	25	4.2
74	230	224.43	219.35	68	25	4.2
75	233	227.46	222.33	68	25	4.2
76	236	230.49	225.41	68	25	4.2
77	239	233.52	228.39	68	25	4.2
78	242	236.55	231.47	68	25	4.2
79	245	239.58	234.46	68	25	4.2
80	248	242.61	237.53	68	25	4.2