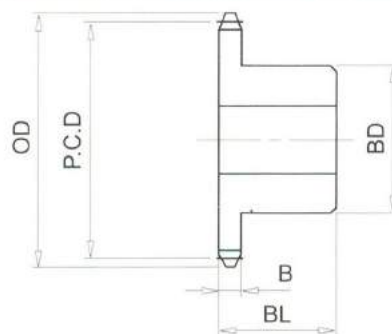


RS35# (3/8" PICH) DIMENSIONS

Bánh Răng Xích (gù)
 Chất Liệu S35C
 B Type Sprocket
 Material S35C



No. of Teeth	Outside Diam. OD	Pitch Diam. P.C.D	Bottom or Capliper Diam.	BD	BL	B
32	102	97.18	92.10	53	22	4.2
33	105	100.20	95.01	53	22	4.2
34	109	103.23	98.15	53	22	4.2
35	112	106.26	101.07	53	22	4.2
36	115	109.29	104.21	53	22	4.2
37	118	112.32	107.13	63	25	4.2
38	121	115.34	110.26	63	25	4.2
39	124	118.37	113.20	63	25	4.2
40	127	121.40	116.32	63	25	4.2
41	130	124.43	119.26	63	25	4.2
42	133	127.46	122.38	63	25	4.2
43	136	130.49	125.32	63	25	4.2
44	139	133.52	128.44	63	25	4.2
45	142	136.55	131.38	63	25	4.2
46	145	139.58	134.50	63	25	4.2
47	148	142.61	137.45	63	25	4.2
48	151	145.64	140.56	63	25	4.2
49	154	148.67	143.51	63	25	4.2
50	157	151.69	146.61	63	25	4.2
51	160	154.72	149.57	63	25	4.2
52	163	157.75	152.67	63	25	4.2
53	166	160.78	155.63	63	25	4.2
54	169	163.82	158.74	63	25	4.2
55	172	166.85	161.70	63	25	4.2