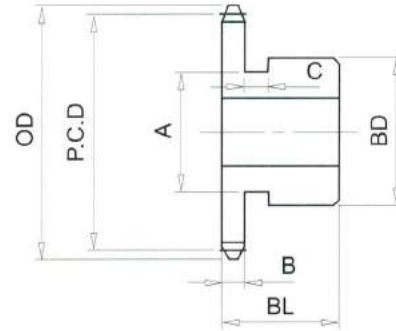


RS35# (3/8" PICH) DIMENSIONS

Bánh Răng Xích (gù)
 Chất Liệu S35C
 B Type Sprocket
 Material S35C



No. of Teeth	Outside Diam. OD	Pitch Diam. P.C.D	Bottom or Capliper Diam.	A	BD	BL	B	C
8	28	24.89	19.81	14	18	20	4.2	4
9	32	27.85	22.35	17	21	20	4.2	4
10	35	30.82	25.74	20	24	20	4.2	4
11	38	33.81	28.38	22	26	20	4.2	4
12	41	36.80	31.72	27	31	20	4.2	4
13	44	39.80	34.43	29	32	20	4.2	4
14	47	42.80	37.72	32	20	4.2		
15	51	45.81	40.48	35	20	4.2		
16	54	48.82	43.74	37	20	4.2		
17	57	51.84	46.54	41	20	4.2		
18	60	54.85	49.77	44	20	4.2		
19	63	57.87	52.59	47	20	4.2		
20	66	60.89	55.81	50	20	4.2		
21	69	63.91	58.65	53	20	4.2		
22	72	66.93	61.85	56	20	4.2		
23	75	69.95	64.71	60	20	4.2		
24	78	72.97	67.89	53	22	4.2		
25	81	76.00	70.77	53	22	4.2		
26	84	79.02	73.94	53	22	4.2		
27	87	82.05	76.83	53	22	4.2		
28	90	85.07	79.99	53	22	4.2		
29	93	88.10	82.89	53	22	4.2		
30	96	91.12	86.04	53	22	4.2		
31	99	94.15	88.95	53	22	4.2		