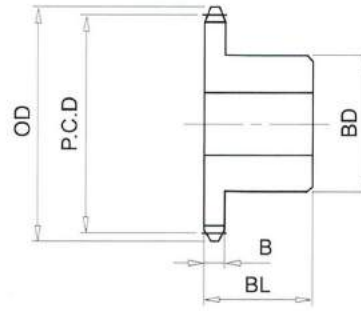


RS25# (1/4" PICH) DIMENSIONS

Bánh Răng Xích (gù)
 Chất Liệu S35C
 B Type Sprocket
 Material S35C



No. of Teeth	Outside Diam. OD	Pitch Diam. P.C.D	Bottom or Capliper Diam.	BD	BL	B
80	165	161.74	158.44	50	30	2.8
81	167	163.76	160.43	50	30	2.8
82	169	165.78	162.48	50	30	2.8
83	171	167.81	164.48	50	30	2.8
84	174	169.83	166.53	50	30	2.8
85	176	171.85	168.52	50	30	2.8
86	178	173.87	170.57	50	30	2.8
87	180	175.89	172.56	50	30	2.8
88	182	177.91	174.61	50	30	2.8
89	184	179.93	176.60	50	30	2.8
90	186	181.95	178.65	50	30	2.8
91	188	183.97	180.64	50	30	2.8
92	190	185.99	182.69	50	30	2.8
93	192	188.01	184.69	50	30	2.8
94	194	190.03	186.73	50	30	2.8
95	196	192.06	188.73	50	30	2.8
96	198	194.08	190.78	50	30	2.8
97	200	196.10	192.77	50	30	2.8
98	202	198.12	194.82	50	30	2.8
99	204	200.14	196.81	50	30	2.8
100	206	202.16	198.86	50	30	2.8