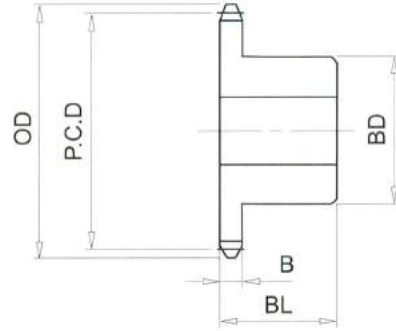


RS25# (1/4" PICH) DIMENSIONS

Bánh Răng Xích (gù)
 Chất Liệu S35C
 B Type Sprocket
 Material S35C



No. of Teeth	Outside Diam. OD	Pitch Diam. P.C.D	Bottom or Capliper Diam.	BD	BL	B
56	117	113.25	109.95	50	20	2.8
57	119	115.27	111.93	50	20	2.8
58	121	117.29	113.99	50	20	2.8
59	123	119.31	115.97	50	20	2.8
60	125	121.33	118.03	50	20	2.8
61	127	123.35	120.01	50	30	2.8
62	129	125.37	122.07	50	30	2.8
63	131	127.39	124.05	50	30	2.8
64	133	129.41	126.11	50	30	2.8
65	135	131.43	128.10	50	30	2.8
66	137	133.45	130.15	50	30	2.8
67	139	135.47	132.14	50	30	2.8
68	141	137.50	134.20	50	30	2.8
69	143	139.52	136.18	50	30	2.8
70	145	141.54	138.24	50	30	2.8
71	147	143.56	140.22	50	30	2.8
72	149	145.58	142.28	50	30	2.8
73	151	147.60	144.26	50	30	2.8
74	153	149.62	146.32	50	30	2.8
75	155	151.64	148.31	50	30	2.8
76	157	153.66	150.36	50	30	2.8
77	159	155.68	152.35	50	30	2.8
78	161	157.70	154.40	50	30	2.8
79	163	159.72	156.39	50	30	2.8