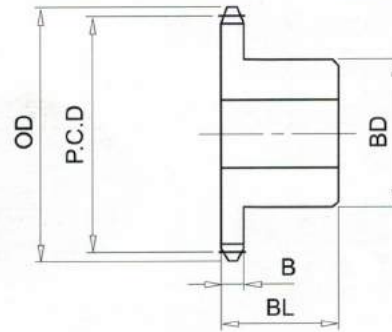


RS25# (1/4" PICH) DIMENSIONS

Bánh Răng Xích (gù)
 Chất Liệu S35C
 B Type Sprocket
 Material S35C



No. of Teeth	Outside Diam. OD	Pitch Diam. P.C.D	Bottom or Capliper Diam.	BD	BL	B
32	68	64.78	61.48	40	20	2.8
33	70	66.80	63.43	40	20	2.8
34	72	68.82	65.52	40	20	2.8
35	74	70.84	67.47	40	20	2.8
36	76	72.86	69.56	40	20	2.8
37	78	74.88	71.51	40	20	2.8
38	80	76.90	73.60	40	20	2.8
39	82	78.91	75.55	40	20	2.8
40	84	80.93	77.63	40	20	2.8
41	87	82.95	79.59	50	20	2.8
42	89	84.97	81.67	50	20	2.8
43	91	86.99	83.63	50	20	2.8
44	93	89.01	85.71	50	20	2.8
45	95	91.03	87.68	50	20	2.8
46	97	93.05	89.75	50	20	2.8
47	99	95.07	91.72	50	20	2.8
48	101	97.09	93.79	50	20	2.8
49	103	99.11	95.76	50	20	2.8
50	105	101.13	97.83	50	20	2.8
51	107	103.15	99.80	50	20	2.8
52	109	105.17	101.87	50	20	2.8
53	111	107.19	103.84	50	20	2.8
54	113	109.21	105.91	50	20	2.8
55	115	111.23	107.88	50	20	2.8