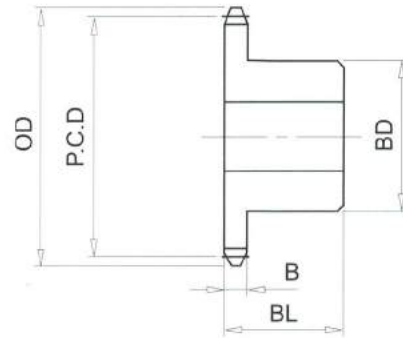


RS120# (1 1/2" PICH) DIMENSIONS

Bánh Răng Xích (gù)
 Chất Liệu S35C

B Type Sprocket
 Material S35C



No. of Teeth	Outside Diam. OD	Pitch Diam. P.C.D	Bottom or Capliper Diam.	BD	BL	B
56	701	679.50	657.27	147	100	23.5
57	713	691.62	669.13	147	100	23.5
58	726	703.75	681.52	147	100	23.5
59	738	715.87	693.38	147	100	23.5
60	750	727.99	705.76	167	100	23.5
61	762	740.11	717.64			
62	774	752.23	730.00			
63	786	764.36	741.89			
64	798	776.48	754.25			
65	811	788.60	766.14			
66	823	800.72	778.49			
67	835	812.85	790.39			
68	847	824.97	802.74			
69	859	837.09	814.65			
70	871	849.22	826.99			
71	883	861.34	838.90			
72	895	873.46	851.23			
73	908	885.59	863.15			
74	920	897.71	875.48			
75	932	909.84	887.41			
76	944	921.96	899.73			
77	956	934.09	911.66			
78	968	946.21	923.98			
79	980	958.33	935.91			
80	993	970.46	948.23			