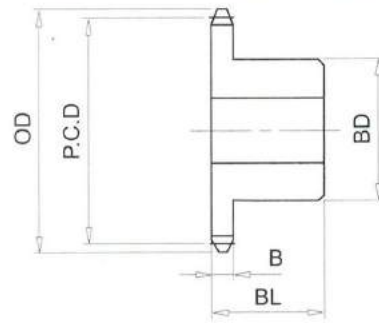


RS120# (11/2" PICH) DIMENSIONS

Bánh Răng Xích (gù)
 Chất Liệu S35C
 B Type Sprocket
 Material S35C



No. of Teeth	Outside Diam. OD	Pitch Diam. P.C.D	Bottom or Capliper Diam.	BD	BL	B
32	410	388.71	366.48	137	71	23.5
33	422	400.82	378.13	137	71	23.5
34	434	412.93	390.70	137	71	23.5
35	446	425.04	402.38	137	71	23.5
36	458	437.15	414.92	137	71	23.5
37	471	449.26	426.63	137	71	23.5
38	483	461.37	439.14	137	71	23.5
39	495	473.49	450.87	137	71	23.5
40	507	485.60	463.37	147	80	23.5
41	519	497.72	475.12	147	80	23.5
42	531	509.83	487.60	147	80	23.5
43	543	521.95	499.37	147	80	23.5
44	556	534.07	511.84	147	80	23.5
45	568	546.19	523.62	147	80	23.5
46	580	558.30	536.07	147	80	23.5
47	592	570.42	547.87	147	80	23.5
48	604	582.54	560.31	147	80	23.5
49	616	594.66	572.12	147	80	23.5
50	628	606.78	584.55	147	80	23.5
51	641	618.90	596.38	147	80	23.5
52	653	631.02	608.79	147	80	23.5
53	665	643.14	620.63	147	80	23.5
54	677	655.26	633.03	147	100	23.5
55	689	667.38	644.88	147	100	23.5