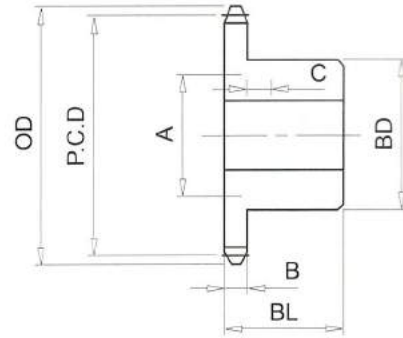


RS120# (11/2" PICH) DIMENSIONS

Bánh Răng Xích (gù)
 Chất Liệu S35C
 B Type Sprocket
 Material S35C



No. of Teeth	Outside Diam. OD	Pitch Diam. P.C.D	Bottom or Capliper Diam.	BD	BL	B
8	115	99.56	77.33	60	56	23.5
9	128	111.40	87.47	70	56	23.5
10	140	123.29	101.06	78	56	23.5
11	153	135.23	111.63	91	56	23.5
12	165	147.21	124.98	98	56	23.5
13	177	159.20	135.81	98	56	23.5
14	190	171.22	148.99	107	56	23.5
15	202	183.25	160.02	117	63	23.5
16	214	195.29	173.06	117	63	23.5
17	227	207.35	184.23	117	63	23.5
18	239	219.41	197.18	117	63	23.5
19	251	231.48	208.46	117	63	23.5
20	263	243.55	221.32	127	63	23.5
21	276	255.63	232.69	127	63	23.5
22	288	267.72	245.49	127	63	23.5
23	300	279.80	256.92	127	63	23.5
24	312	291.90	269.67	127	63	23.5
25	324	303.99	281.16	127	63	23.5
26	337	316.09	293.86	127	63	23.5
27	349	328.19	305.40	127	63	23.5
28	361	340.29	318.06	137	71	23.5
29	373	352.39	329.64	137	71	23.5
30	385	364.49	342.26	137	71	23.5
31	398	376.60	353.89	137	71	23.5