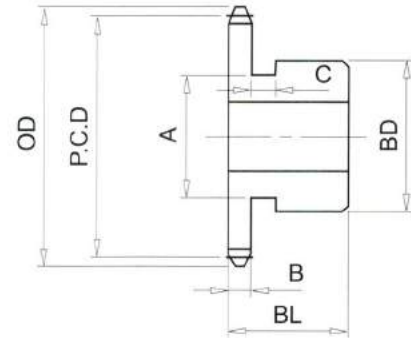


## RS100# (11/4" PICH) DIMENSIONS

Bánh Răng Xích (gù)  
 Chất Liệu S35C  
 B Type Sprocket  
 Material S35C



No. of Teeth	Outside Diam. <b>OD</b>	Pitch Diam. <b>P.C.D</b>	Bottom or Capliper Diam.	<b>A</b>	<b>BD</b>	<b>BL</b>	<b>B</b>
8	96	82.97	63.92	50	60	50	17.6
9	106	92.83	73.37	52	70	50	17.6
10	117	102.75	83.70	65	80	50	17.6
11	127	112.70	92.50	75		50	17.6
12	138	122.67	103.62	86		50	17.6
13	148	132.67	112.65	94		50	17.6
14	158	142.68	123.63	98		50	17.6
15	168	152.71	132.82	98		50	17.6
16	179	162.75	143.70	98		50	17.6
17	189	172.79	153.00	107		50	17.6
18	199	182.84	163.79	107		50	17.6
19	209	192.90	173.19	107		50	17.6
20	220	202.96	183.91	107		50	17.6
21	230	213.03	193.38	107		50	17.6
22	240	223.10	204.05	117		56	17.6
23	250	233.17	213.58	117		56	17.6
24	260	243.25	224.20	117		56	17.6
25	270	253.32	233.77	117		56	17.6
26	281	263.41	244.36	117		56	17.6
27	291	273.49	253.98	117		56	17.6
28	301	283.57	264.52	117		56	17.6
29	311	293.66	274.18	117		56	17.6
30	321	303.75	284.70	117		56	17.6
31	331	313.83	294.38	117		56	17.6