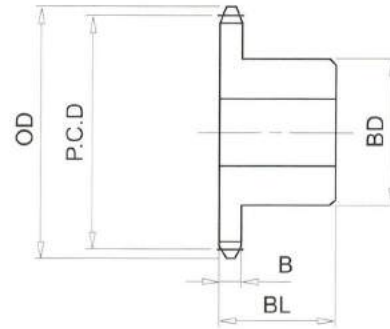


## RS80# (1" PICH) DIMENSIONS

Bánh Răng Xích (gù)  
 Chất Liệu S35C  
 B Type Sprocket  
 Material S35C



No. of Teeth	Outside Diam. <b>OD</b>	Pitch Diam. <b>P.C.D</b>	Bottom or Capliper Diam.	<b>BD</b>	<b>BL</b>	<b>B</b>
56	468	453.00	437.12	117	50	14.6
57	476	461.08	445.03	117	50	14.6
58	484	469.16	453.28	117	50	14.6
59	492	477.24	461.20	117	50	14.6
60	500	485.33	469.45	117	50	14.6
61	508	493.41	477.36	127	50	14.6
62	516	501.49	485.61	127	50	14.6
63	524	509.57	493.53	127	50	14.6
64	532	517.65	501.77	127	50	14.6
65	540	525.73	509.70	127	63	14.6
66	548	533.82	517.94	127	63	14.6
67	557	541.90	525.87	127	63	14.6
68	565	549.98	534.10	127	63	14.6
69	573	558.06	542.04	127	63	14.6
70	581	566.15	550.27	127	63	14.6
71	589	574.23	558.21	127	63	14.6
72	597	582.31	566.43	127	63	14.6
73	605	590.39	574.38	127	63	14.6
74	613	598.48	582.60	127	63	14.6
75	621	606.56	590.54	127	63	14.6
76	629	614.64	598.76	127	63	14.6
77	637	622.72	606.71	127	63	14.6
78	646	630.81	614.93	127	63	14.6
79	654	638.89	622.88	127	63	14.6
80	662	646.97	631.09	137	71	14.6