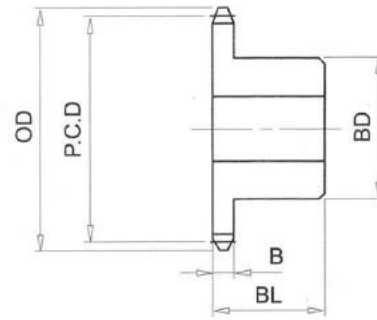


RS80# (1" PICH) DIMENSIONS

Bánh Răng Xích (gù)
Chất Liệu S35C

B Type Sprocket
Material S35C



No. of Teeth	Outside Diam. OD	Pitch Diam. P.C.D	Bottom or Capliper Diam.	BD	BL	B
32	273	259.14	243.26	107	45	14.6
33	281	267.21	251.03	107	45	14.6
34	289	275.28	259.40	107	45	14.6
35	297	283.36	267.19	107	45	14.6
36	306	291.43	275.55	117	50	14.6
37	314	299.51	283.36	117	50	14.6
38	322	307.58	291.70	117	50	14.6
39	330	315.66	299.52	117	50	14.6
40	338	323.74	307.86	117	50	14.6
41	346	331.81	315.69	117	50	14.6
42	354	339.89	324.01	117	50	14.6
43	362	347.97	331.86	117	50	14.6
44	370	356.05	340.17	117	50	14.6
45	378	364.12	348.02	117	50	14.6
46	387	372.20	356.32	117	50	14.6
47	395	380.28	364.19	117	50	14.6
48	403	388.36	372.48	117	50	14.6
49	411	396.44	380.36	117	50	14.6
50	419	404.52	388.64	117	50	14.6
51	427	412.60	396.52	117	50	14.6
52	435	420.68	404.80	117	50	14.6
53	443	428.76	412.69	117	50	14.6
54	451	436.84	420.96	117	50	14.6
55	459	444.92	428.86	117	50	14.6