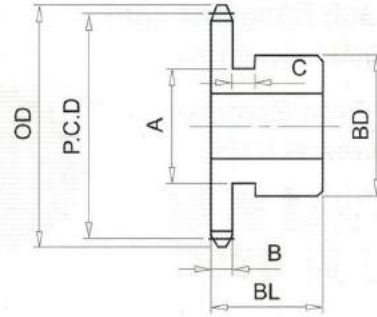


## RS80# (1" PICH) DIMENSIONS

Bánh Răng Xích (gù)  
 Chất Liệu S35C  
 B Type Sprocket  
 Material S35C



No. of Teeth	Outside Diam. OD	Pitch Diam. P.C.D	Bottom or Capliper Diam.	A	BD	BL	B	C
8	76	66.37	50.49	40	50	40	14.6	8
9	85	74.26	57.26	50	56	40	14.6	8
10	93	82.20	66.32	55	61	40	14.6	8
11	102	90.16	73.36	60		40	14.6	
12	110	98.14	82.26	67		40	14.6	
13	118	106.14	89.48	77		40	14.6	
14	127	114.15	98.27	77		40	14.6	
15	135	122.17	105.62	93		40	14.6	
16	143	130.20	114.32	93		40	14.6	
17	151	138.23	121.76	93		40	14.6	
18	159	146.27	130.39	93		40	14.6	
19	167	154.32	137.91	93		40	14.6	
20	176	162.37	146.49	93		40	14.6	
21	184	170.42	154.06	93		40	14.6	
22	192	178.48	162.60	107		45	14.6	
23	200	186.54	170.22	107		45	14.6	
24	208	194.60	178.72	107		45	14.6	
25	216	202.66	186.38	107		45	14.6	
26	224	210.72	194.84	107		45	14.6	
27	233	218.79	202.54	107		45	14.6	
28	241	226.86	210.98	107		45	14.6	
29	249	234.93	218.70	107		45	14.6	
30	257	243.00	227.12	107		45	14.6	
31	265	251.07	234.86	107		45	14.6	