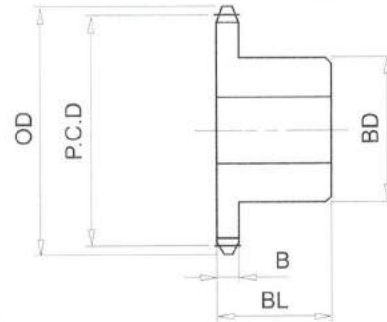


## RS60# (3/4" PICH) DIMENSIONS

Bánh Răng Xích (gù)  
 Chất Liệu S35C  
 B Type Sprocket  
 Material S35C



No. of Teeth	Outside Diam. <b>OD</b>	Pitch Diam. <b>P.C.D</b>	Bottom or Capliper Diam.	<b>BD</b>	<b>BL</b>	<b>B</b>
56	351	339.75	327.84	93	45	11.7
57	357	345.81	333.77	93	45	11.7
58	363	351.87	339.96	93	45	11.7
59	369	357.93	345.90	93	45	11.7
60	375	363.99	352.08	93	45	11.7
61	381	370.06	358.02	93	45	11.7
62	387	376.12	364.21	93	45	11.7
63	393	382.18	370.15	93	45	11.7
64	399	388.24	376.33	93	45	11.7
65	405	394.30	382.28	107	45	11.7
66	411	400.36	388.45	107	45	11.7
67	417	406.42	394.40	107	45	11.7
68	423	412.49	400.58	107	45	11.7
69	430	418.55	406.53	107	45	11.7
70	436	424.61	412.70	107	45	11.7
71	442	430.67	418.66	107	45	11.7
72	448	436.73	424.82	107	45	11.7
73	454	442.79	430.78	107	45	11.7
74	460	448.86	436.95	107	45	11.7
75	466	454.92	442.91	107	45	11.7
76	472	460.98	449.07	117	50	11.7
77	478	467.04	455.04	117	50	11.7
78	484	473.10	461.19	117	50	11.7
79	490	479.17	467.16	117	50	11.7