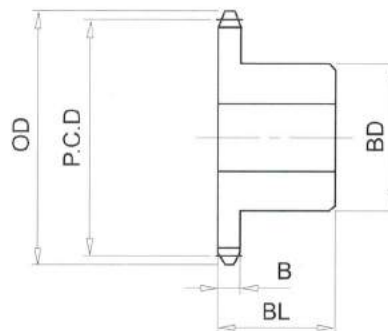


## RS60# (3/4" PICH) DIMENSIONS

Bánh Răng Xích (gù)  
 Chất Liệu S35C  
 B Type Sprocket  
 Material S35C



No. of Teeth	Outside Diam. <b>OD</b>	Pitch Diam. <b>P.C.D</b>	Bottom or Capliper Diam.	<b>DH</b>	<b>BL</b>	<b>B</b>
32	205	194.35	182.44	83	40	11.7
33	211	200.41	188.27	83	40	11.7
34	217	206.46	194.55	83	40	11.7
35	223	212.52	200.39	83	40	11.7
36	229	218.57	206.66	83	40	11.7
37	235	224.63	212.52	83	40	11.7
38	241	230.69	218.78	83	40	11.7
39	247	236.74	224.64	83	40	11.7
40	253	242.80	230.89	83	40	11.7
41	260	248.86	236.77	93	45	11.7
42	266	254.92	243.01	93	45	11.7
43	272	260.98	248.89	93	45	11.7
44	278	267.03	255.12	93	45	11.7
45	284	273.09	261.02	93	45	11.7
46	290	279.15	267.24	93	45	11.7
47	296	285.21	273.14	93	45	11.7
48	302	291.27	279.36	93	45	11.7
49	308	297.33	285.27	93	45	11.7
50	314	303.39	291.48	93	45	11.7
51	320	309.45	297.39	93	45	11.7
52	326	315.51	303.60	93	45	11.7
53	332	321.57	309.52	93	45	11.7
54	339	327.63	315.72	93	45	11.7
55	345	333.69	321.64	93	45	11.7