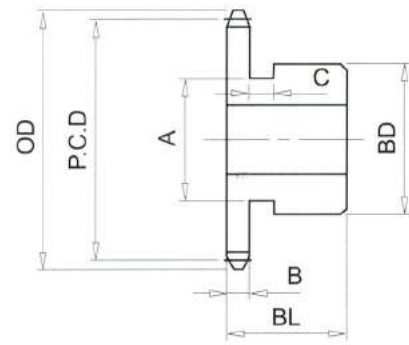


RS60# (3/4" PICH) DIMENSIONS

Bánh Răng Xích (gù)
 Chất Liệu S35C
 B Type Sprocket
 Material S35C



No. of Teeth	Outside Diam. OD	Pitch Diam. P.C.D	Bottom or Capliper Diam.	A	BD	BL	B	C
8	57	49.78	37.87	32	36	32	11.7	7
9	64	55.70	42.94	36	42	32	11.7	7
10	70	61.65	49.74	44	49	32	11.7	7
11	76	67.62	55.02	45	51	32	11.7	7
12	83	73.60	61.69	51		32	11.7	
13	89	79.60	67.11	57		32	11.7	
14	95	85.61	73.70	62		32	11.7	
15	101	91.63	79.21	68		32	11.7	
16	107	97.65	85.74	73		32	11.7	
17	113	103.67	91.32	73		32	11.7	
18	119	109.70	97.79	83		40	11.7	
19	126	115.74	103.43	83		40	11.7	
20	132	121.78	109.87	83		40	11.7	
21	138	127.82	115.55	83		40	11.7	
22	144	133.86	121.95	83		40	11.7	
23	150	139.90	127.67	83		40	11.7	
24	156	145.95	134.04	83		40	11.7	
25	162	151.99	139.78	83		40	11.7	
26	168	158.04	146.13	83		40	11.7	
27	174	164.09	151.91	83		40	11.7	
28	181	170.14	158.23	83		40	11.7	
29	187	176.19	164.03	83		40	11.7	
30	193	182.25	170.34	83		40	11.7	
31	199	188.30	176.15	83		40	11.7	