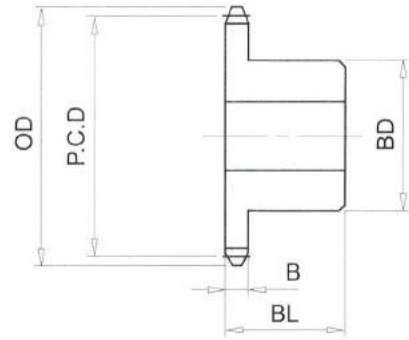


RS50# (5/8" PICH) DIMENSIONS

Bánh Răng Xích (gù)
 Chất Liệu S35C
 B Type Sprocket
 Material S35C



No. of Teeth	Outside Diam. OD	Pitch Diam. P.C.D	Bottom or Capliper Diam.	BD	BL	B
56	292	283.13	272.97	83	35	8.7
57	297	288.18	277.91	83	35	8.7
58	302	293.23	283.07	83	35	8.7
59	307	298.28	288.01	83	35	8.7
60	312	303.33	293.17	83	35	8.7
61	317	308.38	298.12	83	35	8.7
62	323	313.43	303.27	83	35	8.7
63	328	318.48	308.22	83	35	8.7
64	333	323.53	313.37	83	35	8.7
65	338	328.58	318.33	93	40	8.7
66	343	333.64	323.48	93	40	8.7
67	348	338.69	328.43	93	40	8.7
68	353	343.74	333.58	93	40	8.7
69	358	348.79	338.54	93	40	8.7
70	363	353.84	343.68	93	40	8.7
71	368	358.89	348.64	93	40	8.7
72	373	363.94	353.78	93	40	8.7
73	378	369.00	358.75	93	40	8.7
74	383	374.05	363.89	93	40	8.7
75	388	379.10	368.86	93	40	8.7
76	393	384.15	373.99	93	40	8.7
77	398	389.20	378.96	93	40	8.7
78	403	394.25	384.09	93	40	8.7
79	409	399.31	389.07	93	40	8.7
80	414	404.36	394.20	98	45	8.7