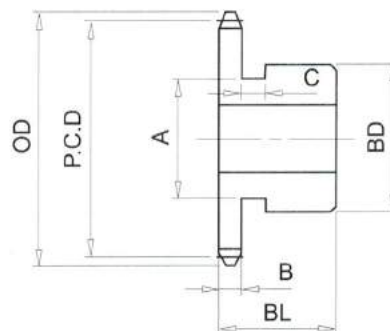


RS50# (5/8" PICH) DIMENSIONS

Bánh Răng Xích (gù)
 Chất Liệu S35C
 B Type Sprocket
 Material S35C



No. of Teeth	Outside Diam. OD	Pitch Diam. P.C.D	Bottom or Capliper Diam.	A	BD	BL	B	C
8	48	41.48	31.32	25	30	25	8.7	6
9	53	46.42	35.55	30	34	25	8.7	6
10	58	51.37	41.21	34	40	25	8.7	6
11	64	56.35	45.61	40	45	25	8.7	6
12	69	61.34	51.18	46	50	25	8.7	6
13	74	66.33	55.69	49	51	25	8.7	6
14	79	71.34	61.18	52	25	8.7		
15	84	76.35	65.78	57	25	8.7		
16	89	81.37	71.21	62	25	8.7		
17	94	86.39	75.87	67	25	8.7		
18	100	91.42	81.26	72	28	8.7		
19	105	96.45	85.96	73	28	8.7		
20	110	101.48	91.32	73	28	8.7		
21	115	106.51	96.06	73	28	8.7		
22	120	111.55	101.39	73	28	8.7		
23	125	116.59	106.15	73	28	8.7		
24	130	121.62	111.46	73	28	8.7		
25	135	126.66	116.25	73	28	8.7		
26	140	131.70	121.54	73	28	8.7		
27	145	136.74	126.35	73	28	8.7		
28	150	141.79	131.63	73	28	8.7		
29	155	146.83	136.45	73	28	8.7		
30	161	151.87	141.71	73	28	8.7		
31	166	156.92	146.56	73	28	8.7		