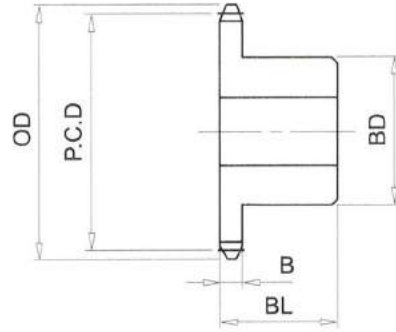


Rs40# (1/2" PICH) DIMENSIONS

Bánh Răng Xích (gù)
 Chất Liệu S35C
 B Type Sprocket
 Material S35C



No. of Teeth	Outside Diam. OD	Pitch Diam. P.C.D	Bottom or Capliper Diam.	BD	BL	B
56	234	226.50	218.55	73	32	7.2
57	238	230.54	222.50	73	32	7.2
58	242	234.58	226.63	73	32	7.2
59	246	238.62	230.59	73	32	7.2
60	250	242.66	234.71	73	32	7.2
61	254	246.70	238.67	73	32	7.2
62	258	250.74	242.79	73	32	7.2
63	262	254.78	246.76	73	32	7.2
64	266	258.83	250.88	73	32	7.2
65	270	262.87	254.84	83	32	7.2
66	274	266.91	258.96	83	32	7.2
67	278	270.95	262.92	83	32	7.2
68	282	274.99	267.04	83	32	7.2
69	286	279.03	271.01	83	32	7.2
70	290	283.07	275.12	83	32	7.2
71	294	287.11	279.09	83	32	7.2
72	298	291.15	283.20	83	32	7.2
73	303	295.20	287.18	83	32	7.2
74	307	299.24	291.29	83	32	7.2
75	311	303.28	295.26	83	32	7.2
76	315	307.32	299.37	83	32	7.2
77	319	311.36	303.35	83	32	7.2
78	323	315.40	307.45	83	32	7.2
79	327	319.44	311.43	83	32	7.2
80	331	323.49	315.54	88	35	7.2