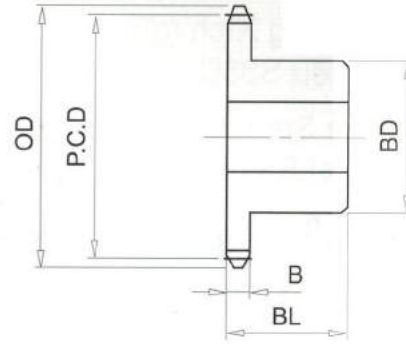


RS40# (1/2" PICH) DIMENSIONS

Bánh Răng Xích (gù)
 Chất Liệu S35C

B Type Sprocket
 Material S35C



No. of Teeth	Outside Diam. OD	Pitch Diam. P.C.D	Bottom or Capliper Diam.	BD	BL	B
32	137	129.57	121.62	68	28	7.2
33	141	133.61	125.50	68	28	7.2
34	145	137.64	129.69	68	28	7.2
35	149	141.68	133.59	68	28	7.2
36	153	145.72	137.77	68	28	7.2
37	157	149.75	141.67	68	28	7.2
38	161	153.79	145.84	68	28	7.2
39	165	157.83	149.75	68	28	7.2
40	169	161.87	153.92	68	28	7.2
41	173	165.91	157.83	73	32	7.2
42	177	169.94	161.99	73	32	7.2
43	181	173.98	165.92	73	32	7.2
44	185	178.02	170.07	73	32	7.2
45	189	182.06	174.00	73	32	7.2
46	193	186.10	178.15	73	32	7.2
47	197	190.14	182.08	73	32	7.2
48	201	194.18	186.23	73	32	7.2
49	205	198.22	190.17	73	32	7.2
50	209	202.26	194.31	73	32	7.2
51	214	206.30	198.25	73	32	7.2
52	218	210.34	202.39	73	32	7.2
53	222	214.38	206.34	73	32	7.2
54	226	218.42	210.47	73	32	7.2
55	230	222.46	214.42	73	32	7.2